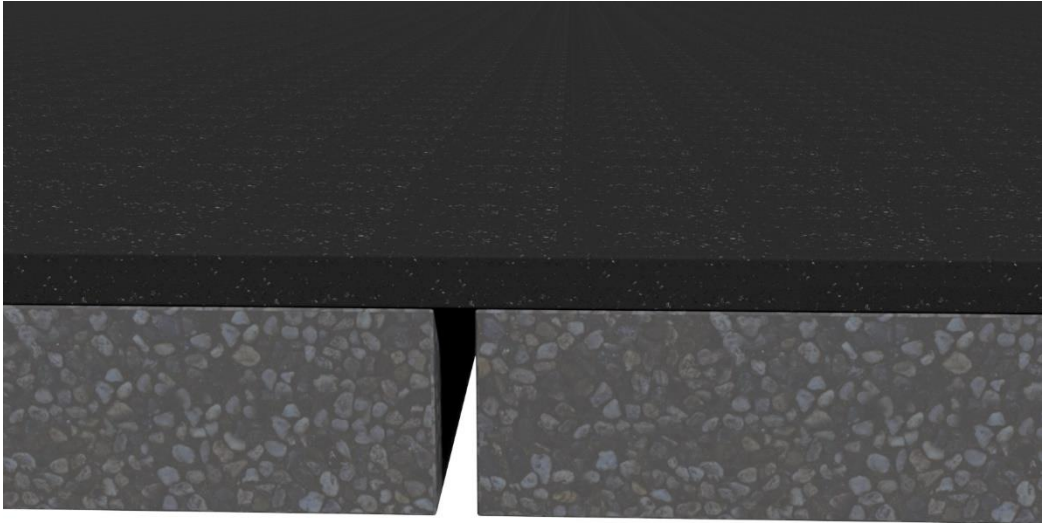


TuffPlug

Flexible Joint System for Bridges & Structures with Asphalt Overlays

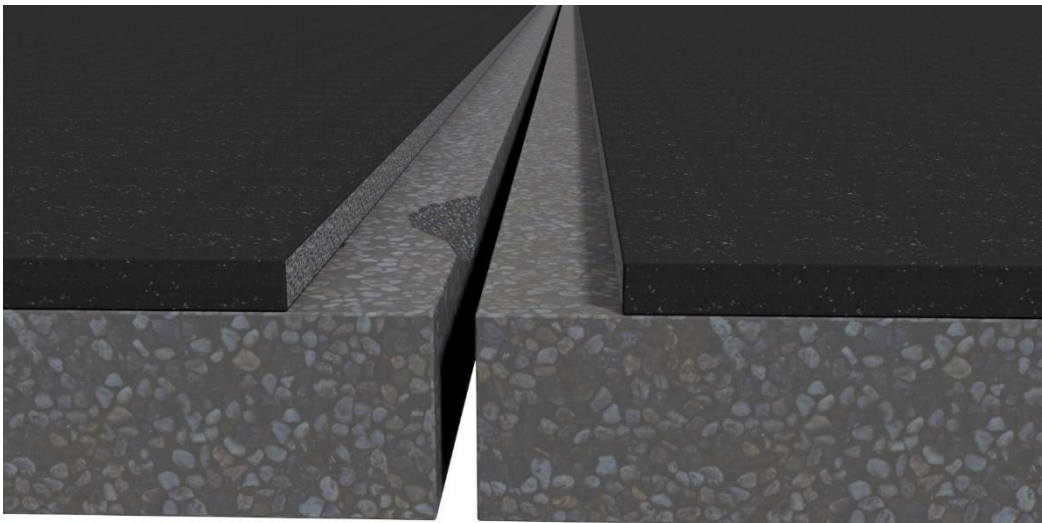
With Asphalt Overlay



Layout and mark joint blockout: 8" minimum to both sides of the joint or 10" if joint opening or movement is greater than 1" (16" or 20" overall.)

*Contact PSI if joint movement is greater than 1.5"

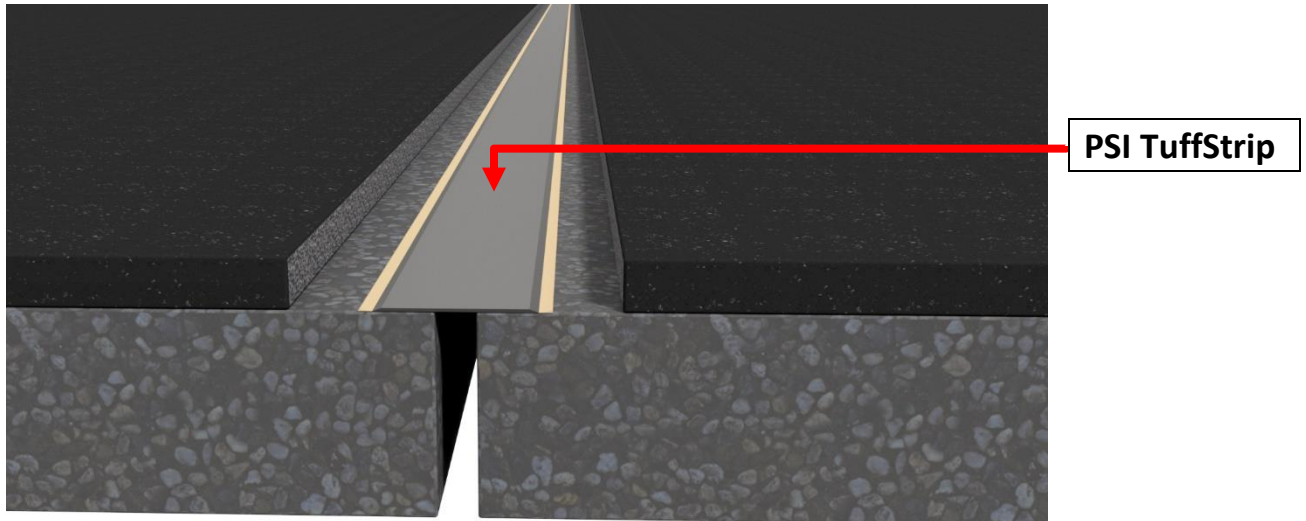
STEP 1



Saw cut and remove asphalt or concrete deck to prescribed width and depth. Patch any damaged concrete with PSI TuffPatch VOH or TuffPoxy 8 mortar. Prepare concrete subgrade by mechanical means to create a clean sound surface and apply TuffPlug Primer if required.

TuffPlug

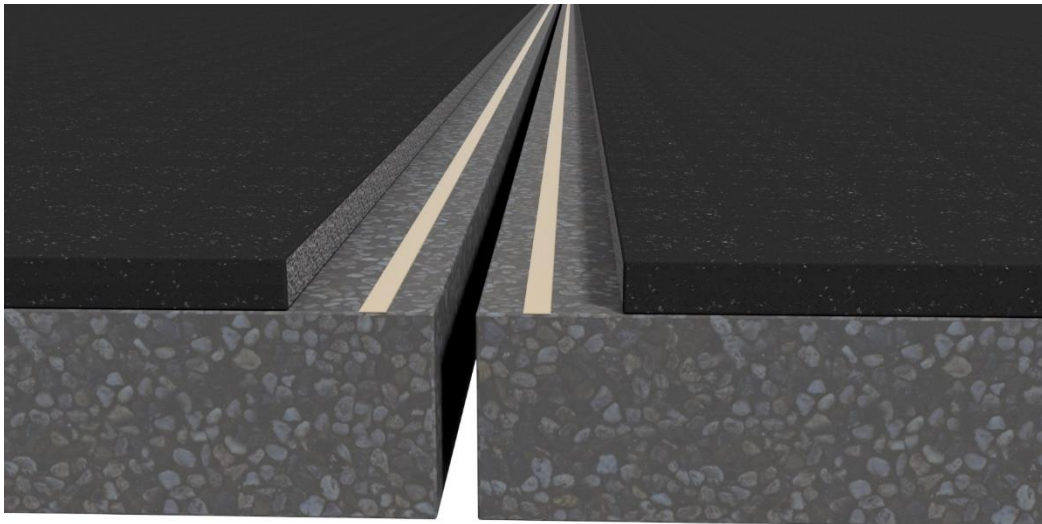
STEP 2a (Using TuffStrip)



For joint openings up to 1", lay PSI TuffStrip membrane evenly across joint opening and adhere to substrate. Proceed to STEP 4.

*If using TuffSteel plates, HDPE, or CFRP strips, disregard STEP 2a, proceed to STEP 2b.

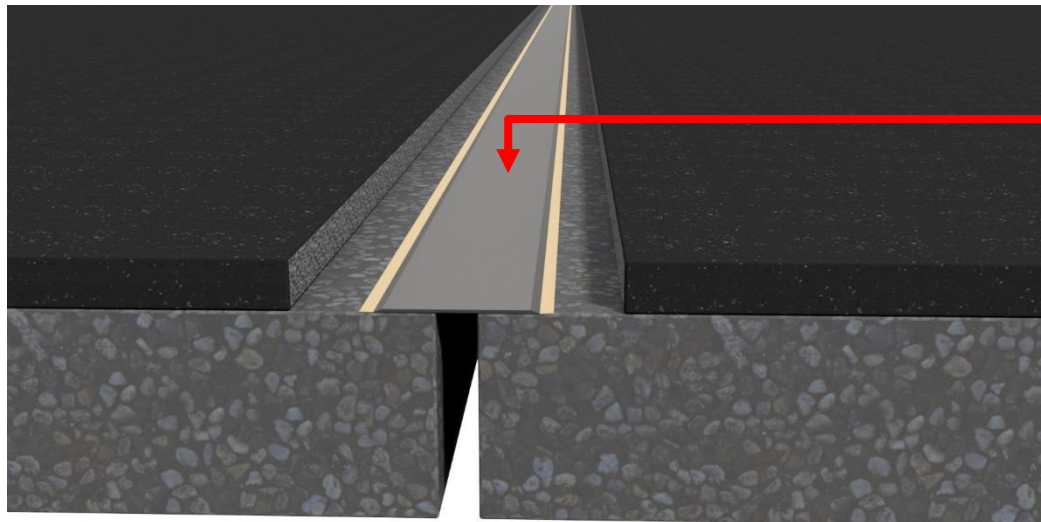
STEP 2b (Using TuffSteel Plate, HDPE or CFRP Strips)



Place bead of TuffSeal NS-1 on both sides of joint opening.

TuffPlug

STEP 3 (Using TuffSteel Plate, HDPE, or CFRP Strips)

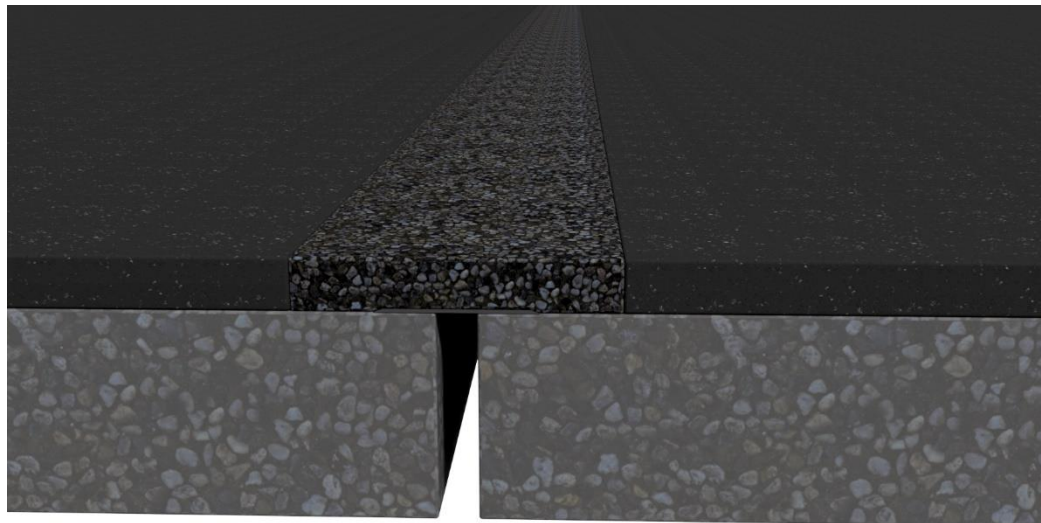


TuffSteel Plate,
HDPE, or CFRP
Strip

Embed 6" (or other designated size) TuffSteel Plate, HDPE or CFRP Strip into TuffSeal NS-1 sealant. Proceed to Step 4.

*Seal joint edge face with TuffPlug Primer if moisture is present prior to installing plate

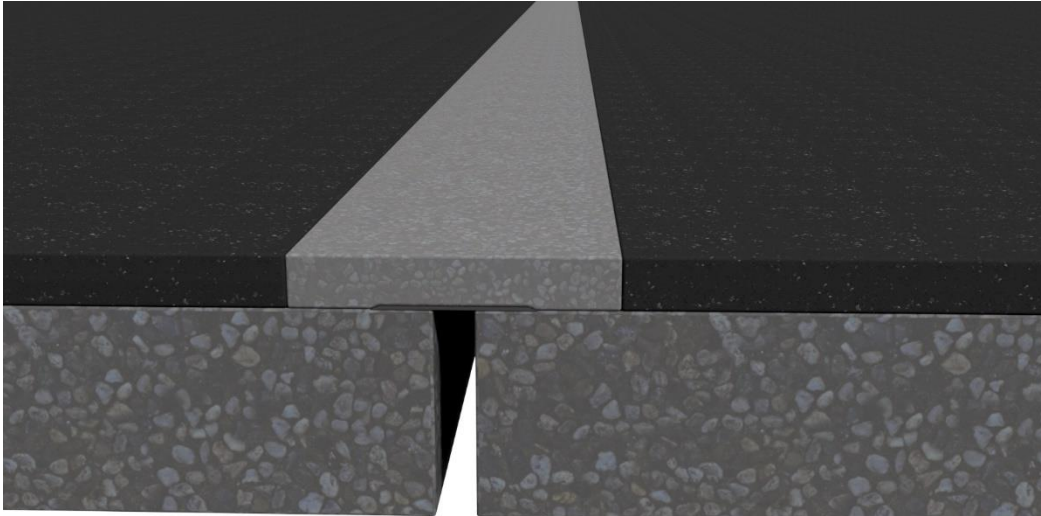
STEP 4



Fill blockout with PSI 3/8" polymer treated aggregate when using the TuffPlug pump system or follow kit instructions.

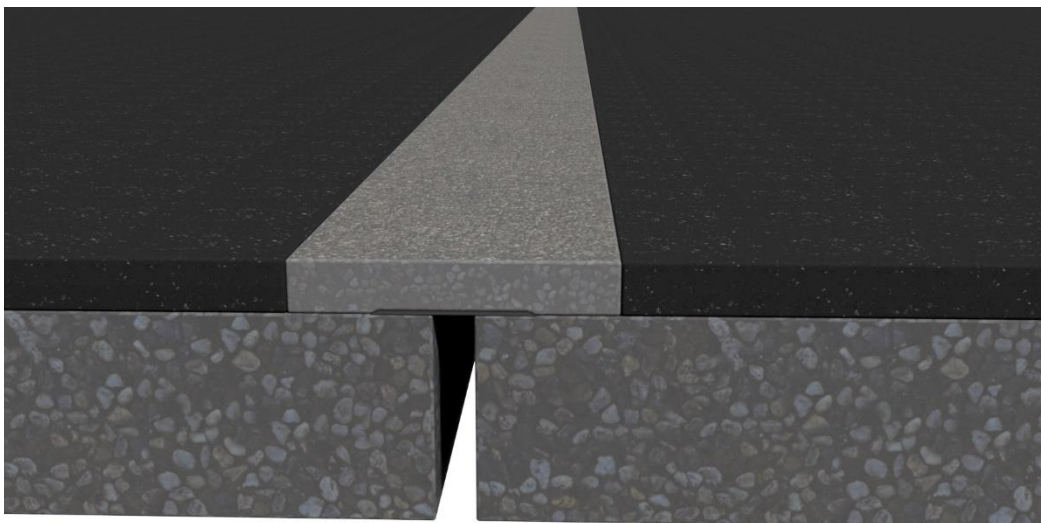
TuffPlug

STEP 5



**Pump TuffPlug polymer into aggregate or place & trowel kit system by hand.
*For proper mixing and installation procedures please see TuffPlug Data Sheet.**

STEP 6



**Broadcast TuffPlug topping aggregate onto surface prior to final cure or
initial set per instructions. OPEN TO TRAFFIC IN LESS THAN ONE HOUR!!!**

Extensive installation instructions for ease of use are available and recommended!