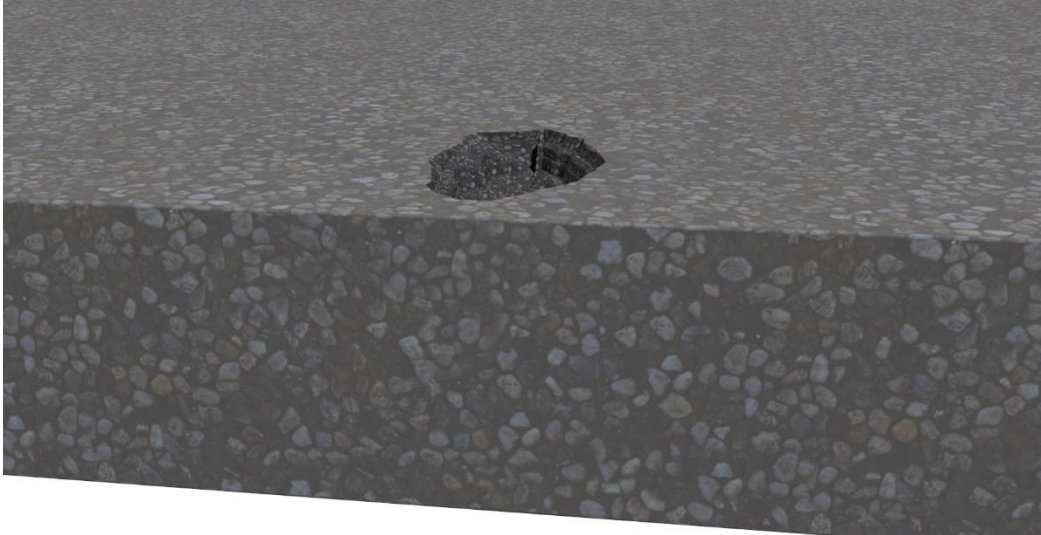


TuffCrete SP & MM

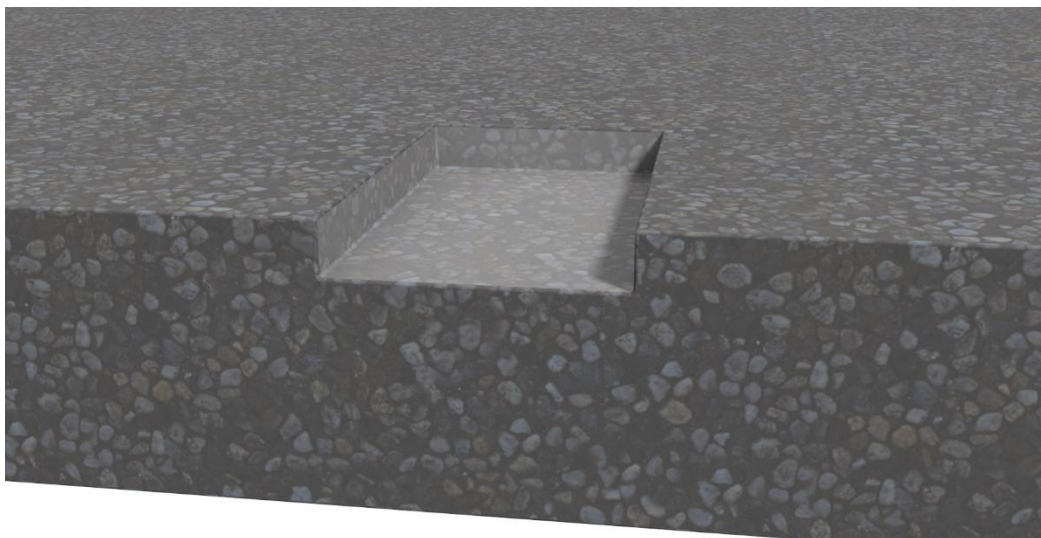
Spall, Pothole, Stitching & Joint Edge Repair

Damaged Concrete



Layout and mark spall or void blackout 2" minimum to either/all sides of the desired repair area and a minimum of 2" deep.

STEP 1

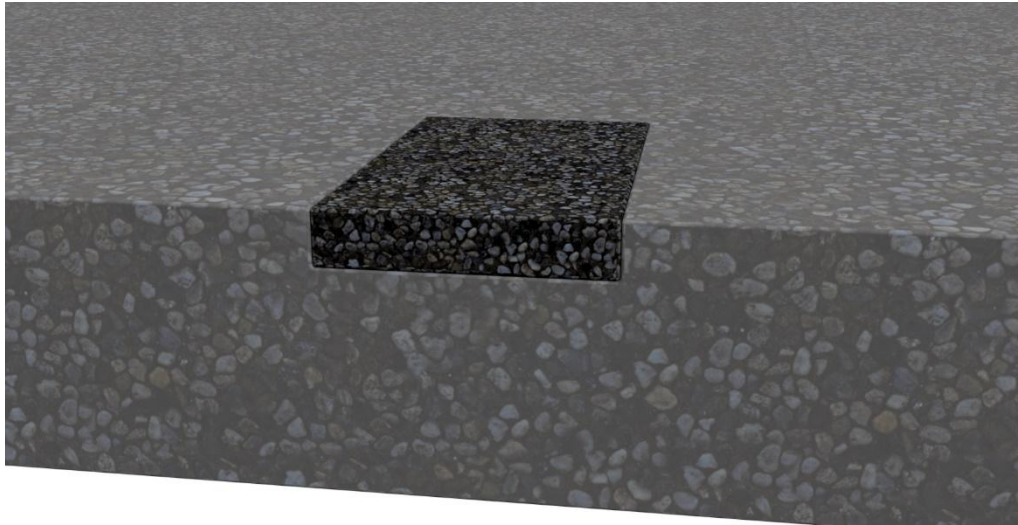


Saw cut concrete to prescribed width and depth. Remove concrete from blackout area. Prepare concrete subgrade by mechanical means to create a clean sound surface and apply TuffCrete Primer if required.

TuffCrete SP & MM

Spall, Pothole Stitching & Joint Edge Repair

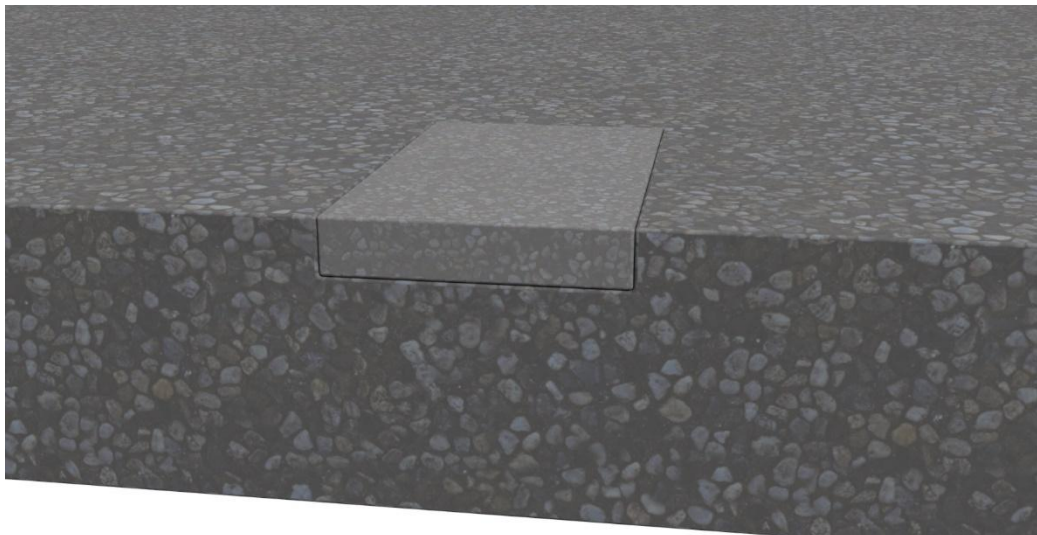
STEP 2



Fill blockout with PSI 3/8" polymer treated aggregate.

*This applies when using the TuffCrete MM pump system. Mix per instructions and place by hand when using the TuffCrete SP Kit system.

STEP 3



Pump TuffCrete MM into aggregate or hand place TuffCrete SP polymer into void. Finish with PSI Topping Sand and open to traffic when set.

Extensive installation instructions for ease of use are available and recommended!