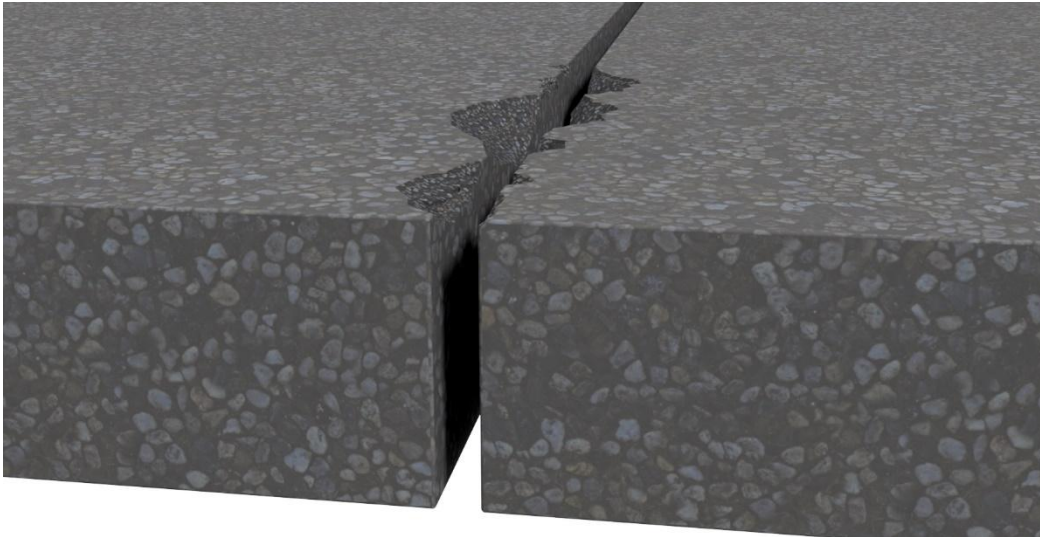


TuffCrete HM

HEADER REPAIR FOR BRIDGE AND PARKING DECKS.

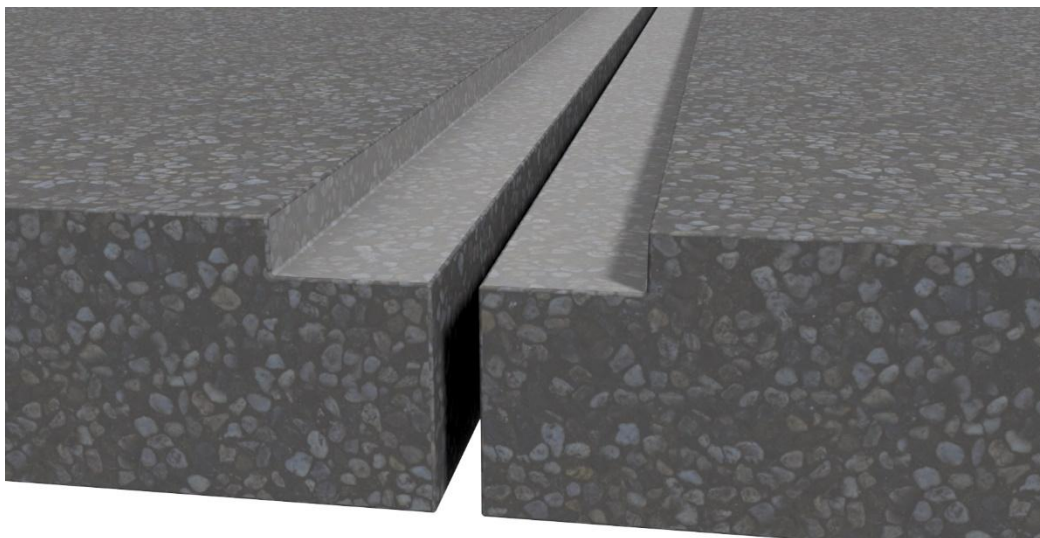
Damaged Joint



Layout and mark joint breakout: 4" minimum to either side of the joint or 6" if joint opening or movement is greater than 1".

***Contact PSI if joint width or movement is greater than 2"**

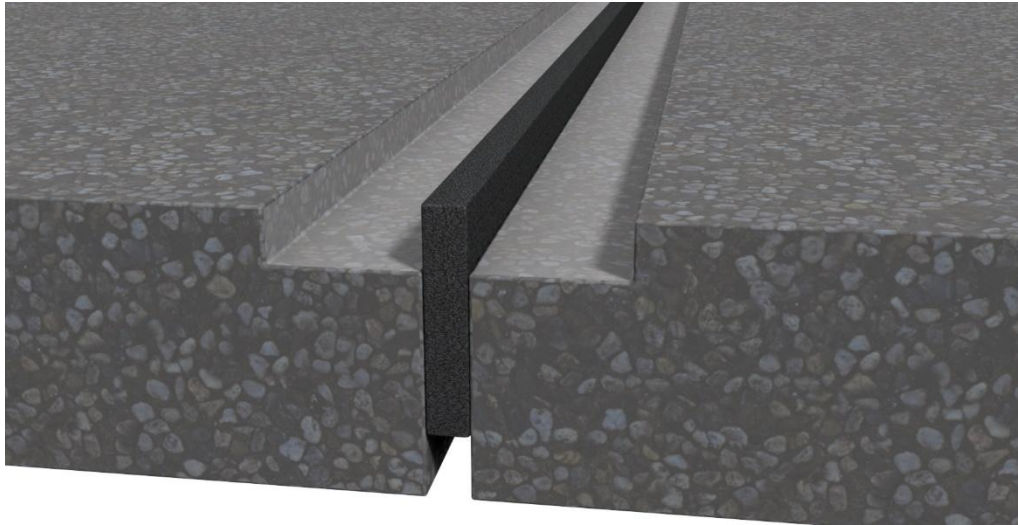
STEP 1



Saw cut topping or concrete deck to prescribed width and depth. Remove concrete from breakout area. Prepare concrete by mechanical means to create a clean sound surface and prime with TuffCrete Primer if required.

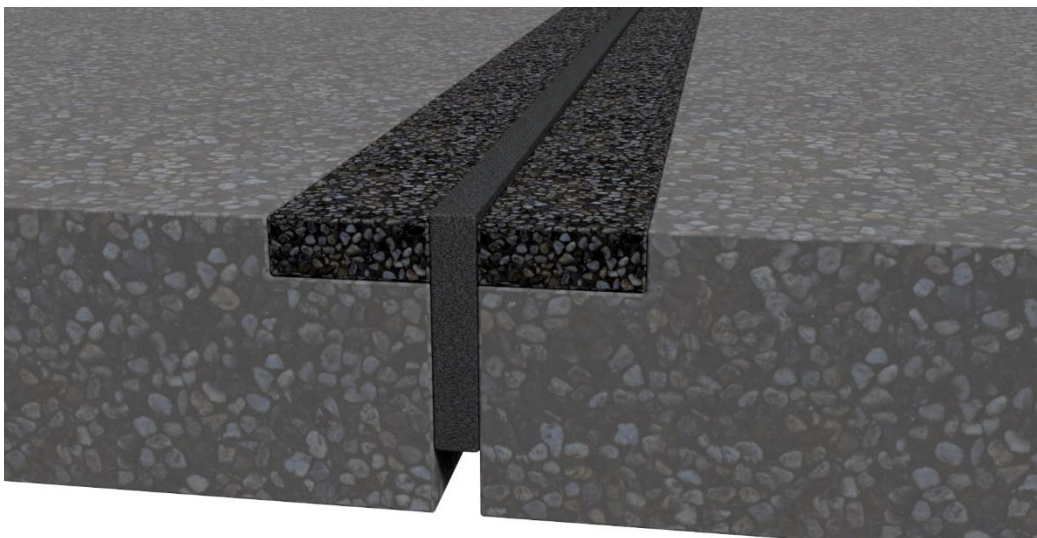
TuffCrete HM

STEP 2



Place foam blockout in joint opening.

STEP 3

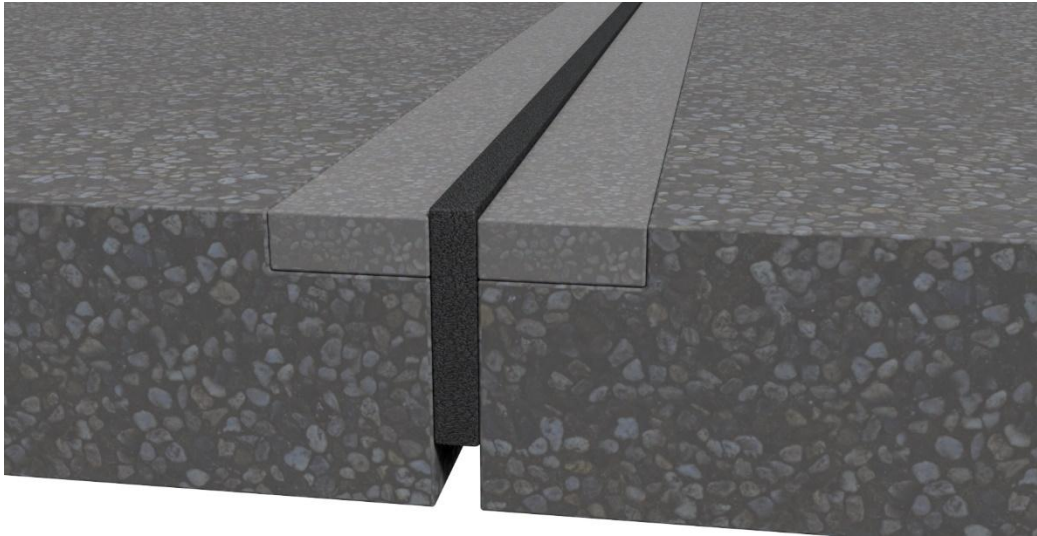


Fill blockout with PSI 3/8" polymer treated aggregate.

*This applies when using the TuffCrete HM pump system. Mix per instructions and place by hand when using the TuffCrete HM Kit system.

TuffCrete HM

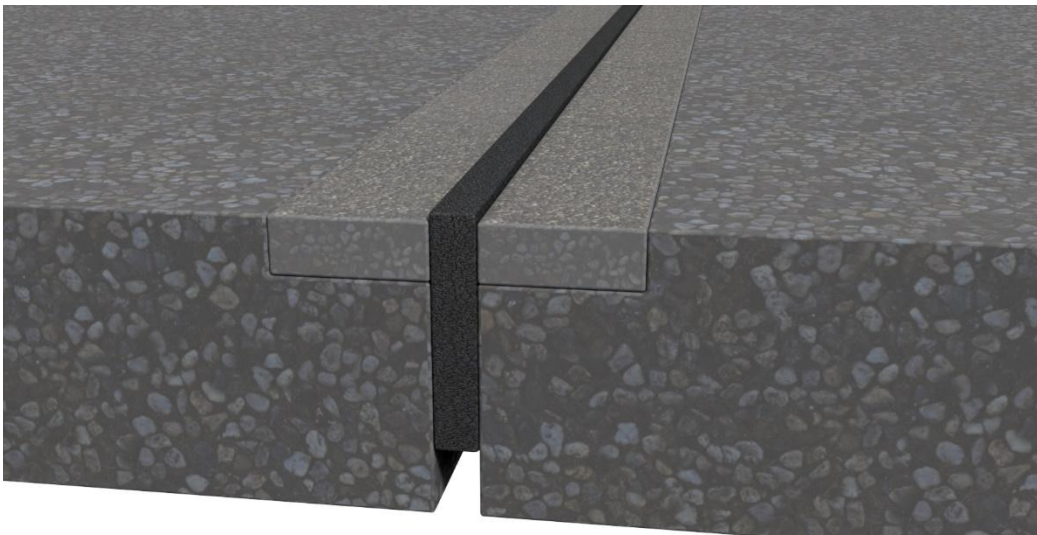
STEP 4



Pump TuffCrete HM polymer into aggregate.

*For proper installation procedures please see TuffCrete HM Data Sheet.

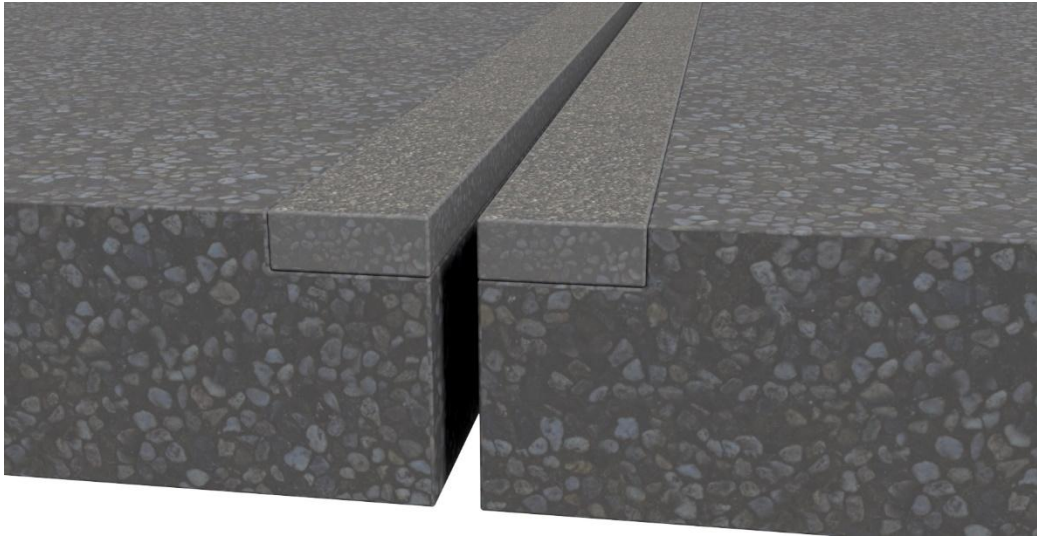
STEP 5



Broadcast PSI Polymer Treated Topping Aggregate onto the wet or unset surface.

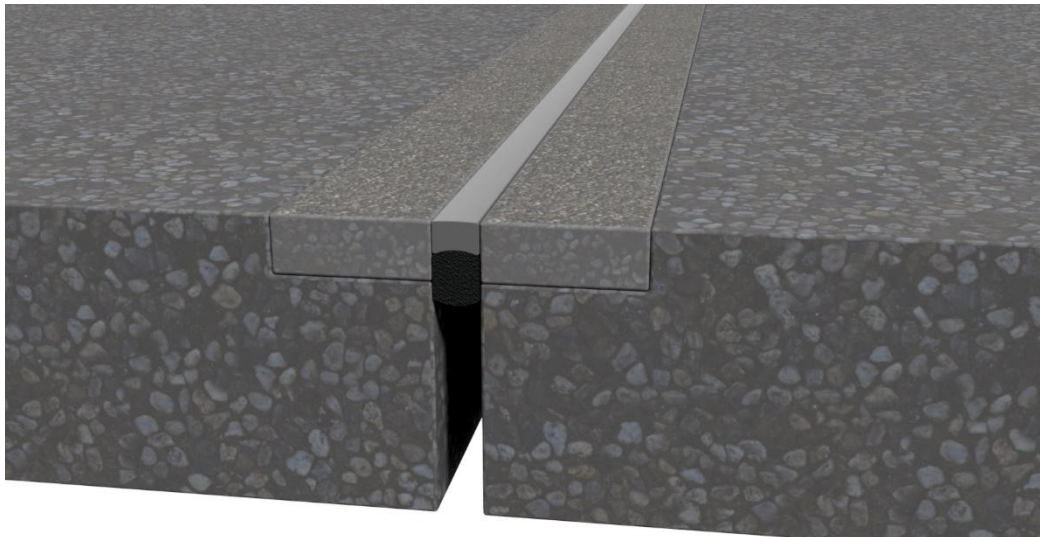
TuffCrete HM

STEP 6



Upon reaching initial set, remove blockout and place PSI backer rod.

STEP 7



Install TuffSeal SL-1 or other desired sealant.

*For proper installation procedures, please see TuffSeal SL-1 or applicable Technical Data Sheet.

Extensive installation instructions for ease of use are available and recommended!