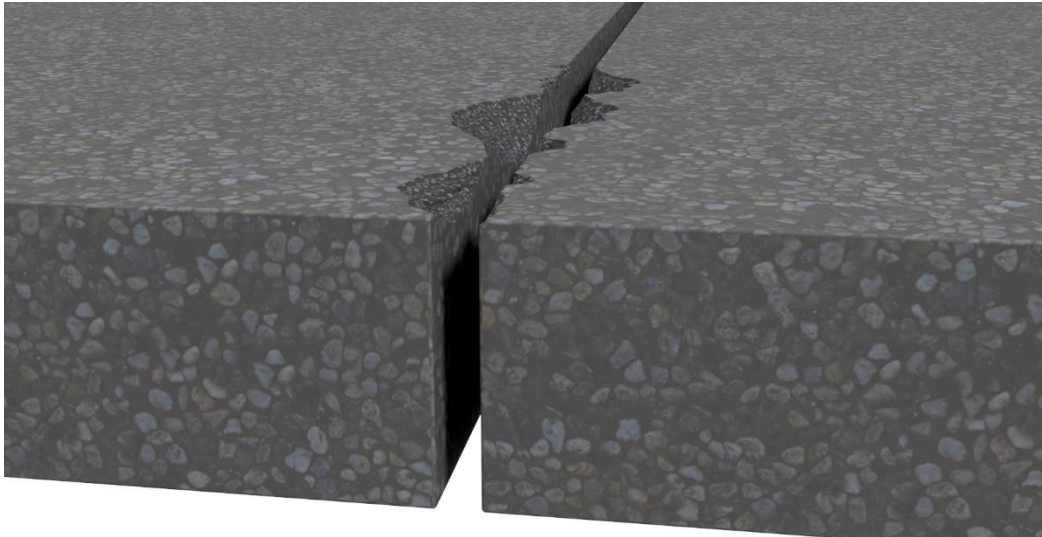


# TuffSeal HS

**FLEXIBLE JOINT SYSTEM FOR BRIDGE AND PARKING DECKS.**

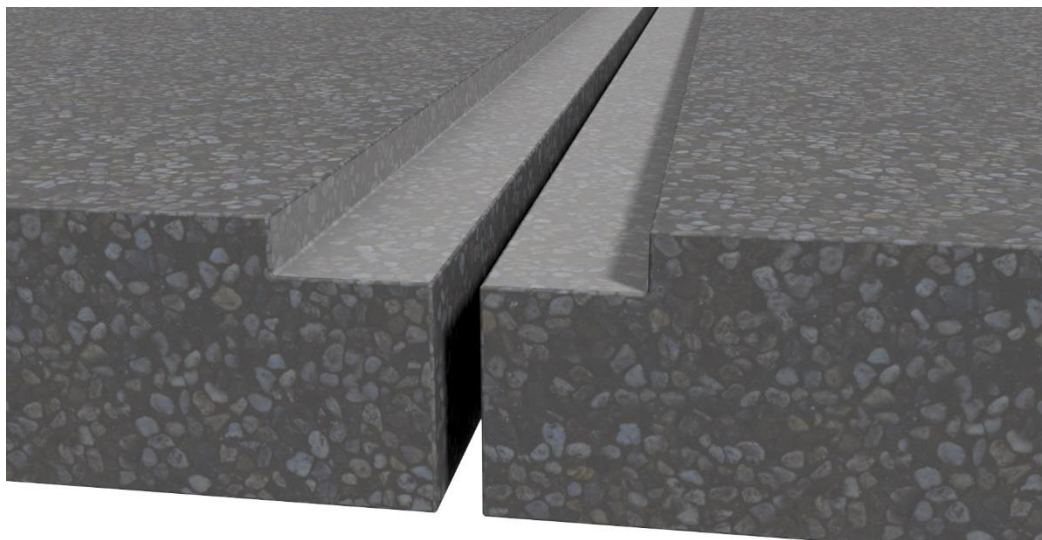
## **Damaged Joint**



Layout and mark joint blackout: 4" minimum to either side of the joint or 6" if joint opening or movement is greater than 1".

\*Contact PSI if joint movement is greater than 1.5"

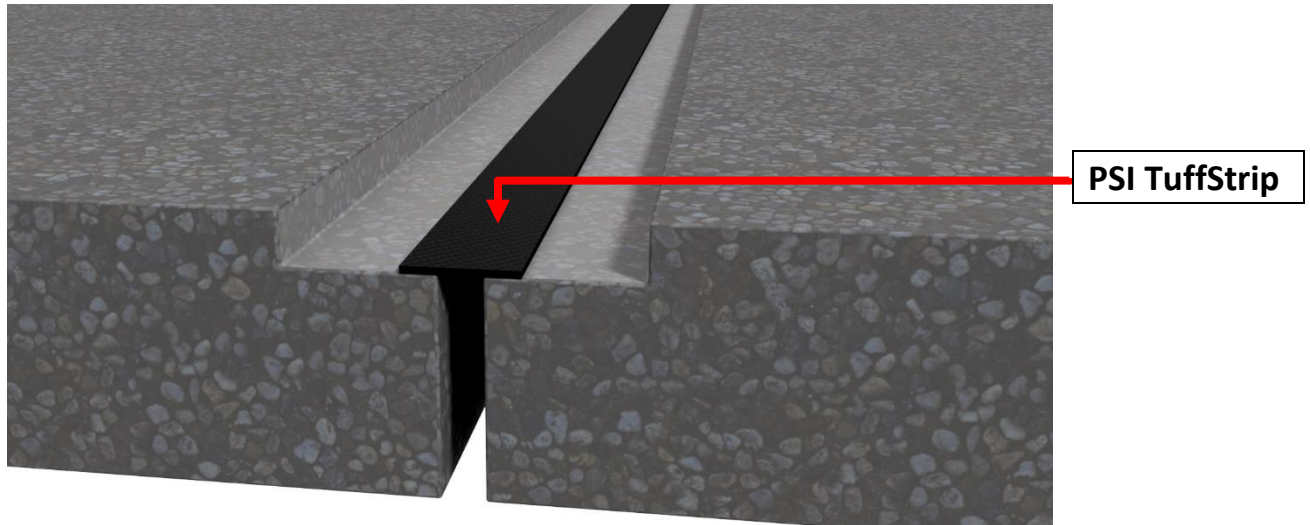
## **STEP 1**



Saw cut concrete deck to prescribed width and depth. Remove concrete from blackout area. Prepare concrete subgrade by mechanical means to create a clean sound surface and apply TuffSeal Primer if required.

# TuffSeal HS

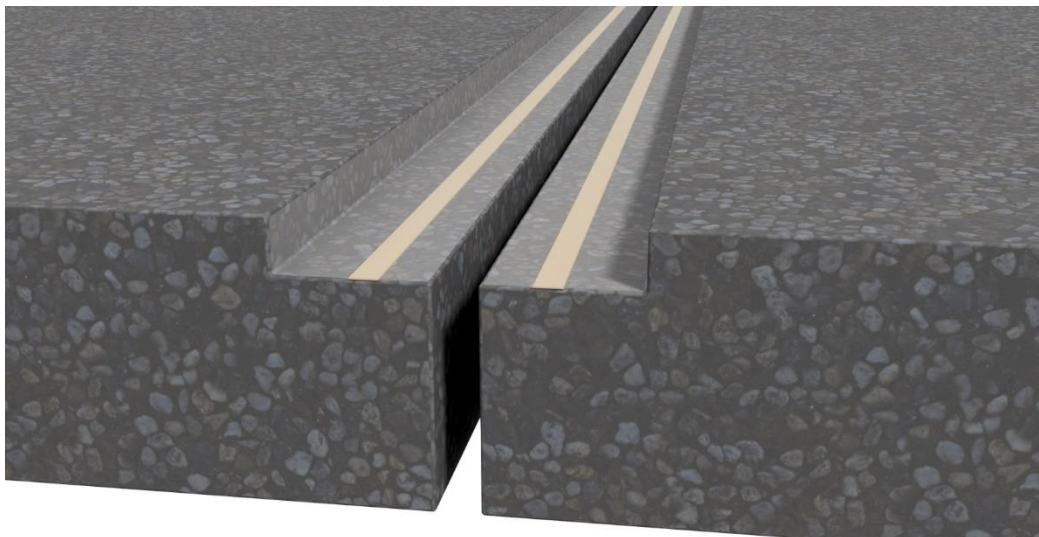
## **STEP 2a (Using TuffStrip)**



For joint openings up to 1", lay PSI TuffStrip membrane evenly across joint opening and adhere to substrate. Proceed to STEP 4.

\* If using TuffSteel plates, HDPE, or CFRP strips, disregard STEP 2a, proceed to STEP 2b.

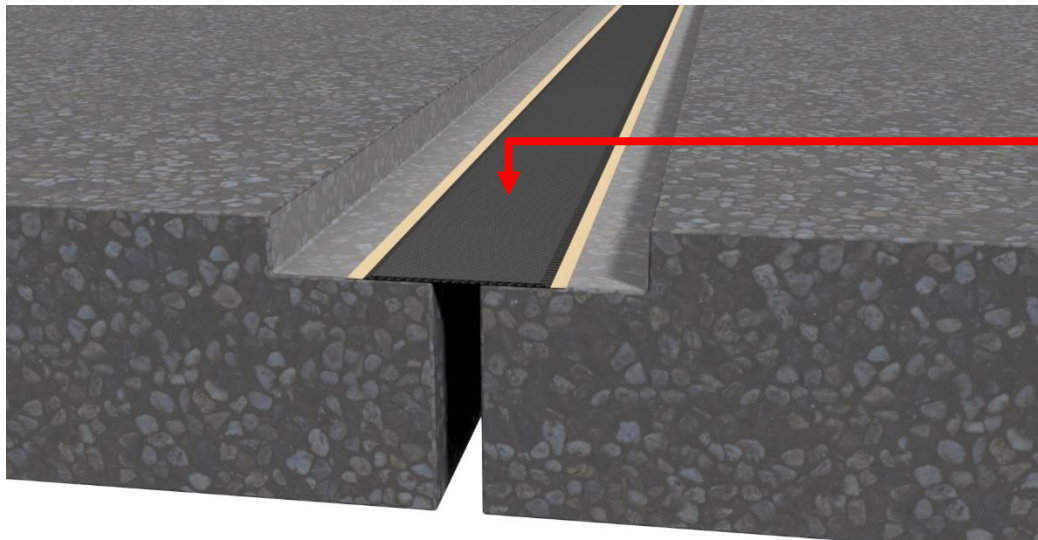
## **STEP 2b (Using TuffSteel Plate, HDPE, or CFRP Strips)**



Place a bead of TuffSeal NS-1 symmetrically on both sides of joint opening.

# TuffSeal HS

## **STEP 3 (Using TuffSteel Plate, HDPE, or CFRP Strips)**

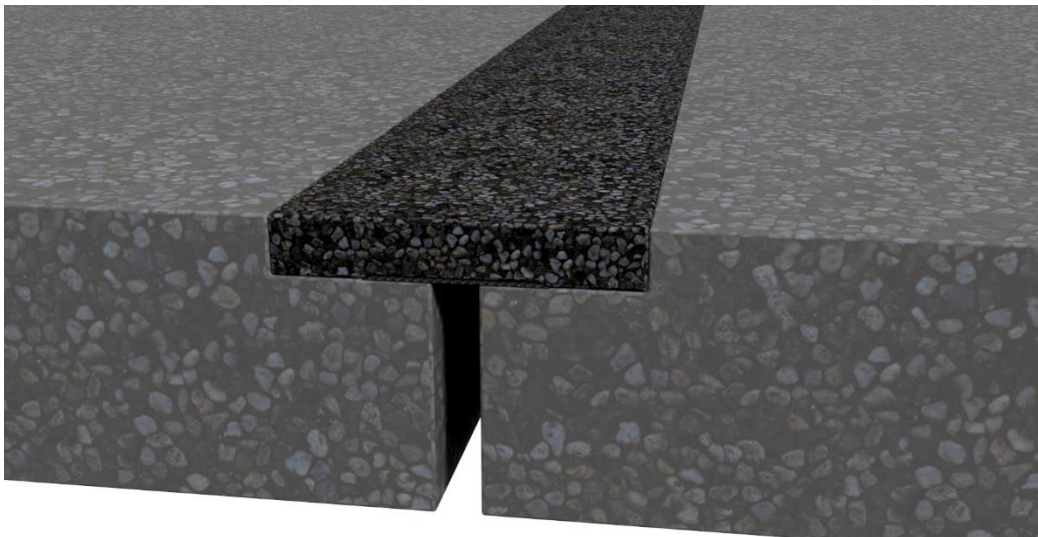


TuffSteel Plate,  
HDPE, or CFRP  
Strip

Embed 6" (or other designated size) TuffSteel Plate, HDPE or CFRP Strip into TuffSeal NS-1 sealant. Proceed to Step 4.

\*Seal joint edge face with TuffSeal Primer if moisture is present prior to installing plate.

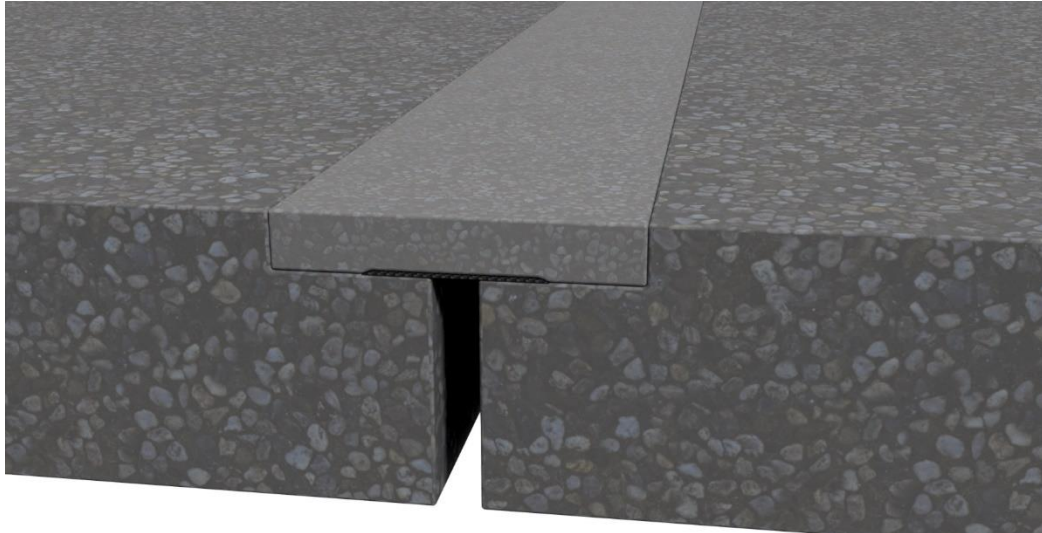
## **STEP 4**



Fill blockout with PSI 3/8" polymer treated aggregate when using the TuffSeal HS pump system or follow kit instructions.

# TuffSeal HS

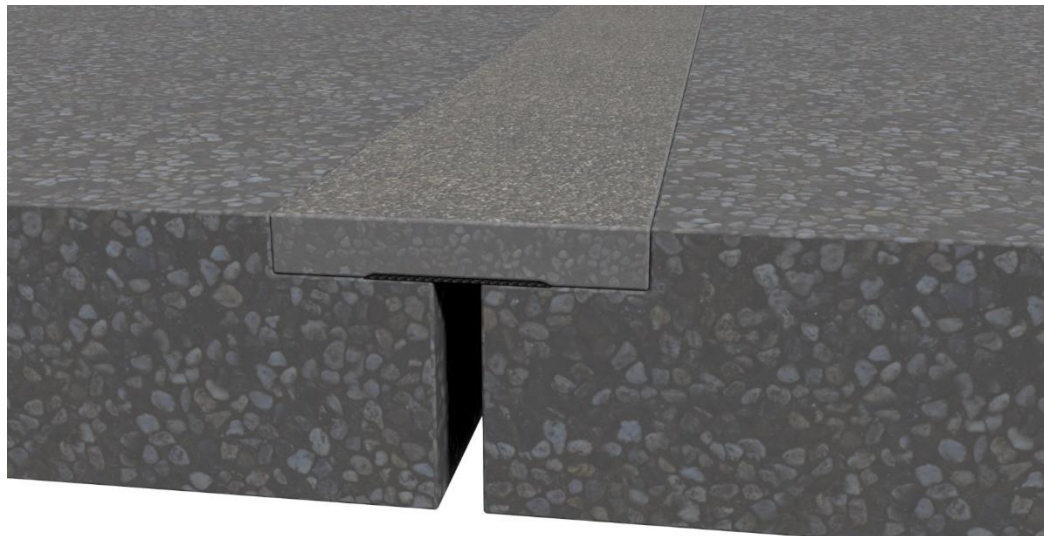
## **STEP 5**



**Pump TuffSeal HS polymer into aggregate or place & trowel Kit system by hand.**

**\*For proper mixing and installation procedures please see TuffSeal HS Data Sheet.**

## **STEP 6**



**Broadcast TuffSeal HS topping aggregate onto wet surface prior to final cure or initial set per instructions. OPEN TO TRAFFIC IN LESS THAN ONE HOUR!!!**

**Extensive installation instructions for ease of use are available and recommended!**