

POLY-TUFF SYSTEMS INTERNATIONAL

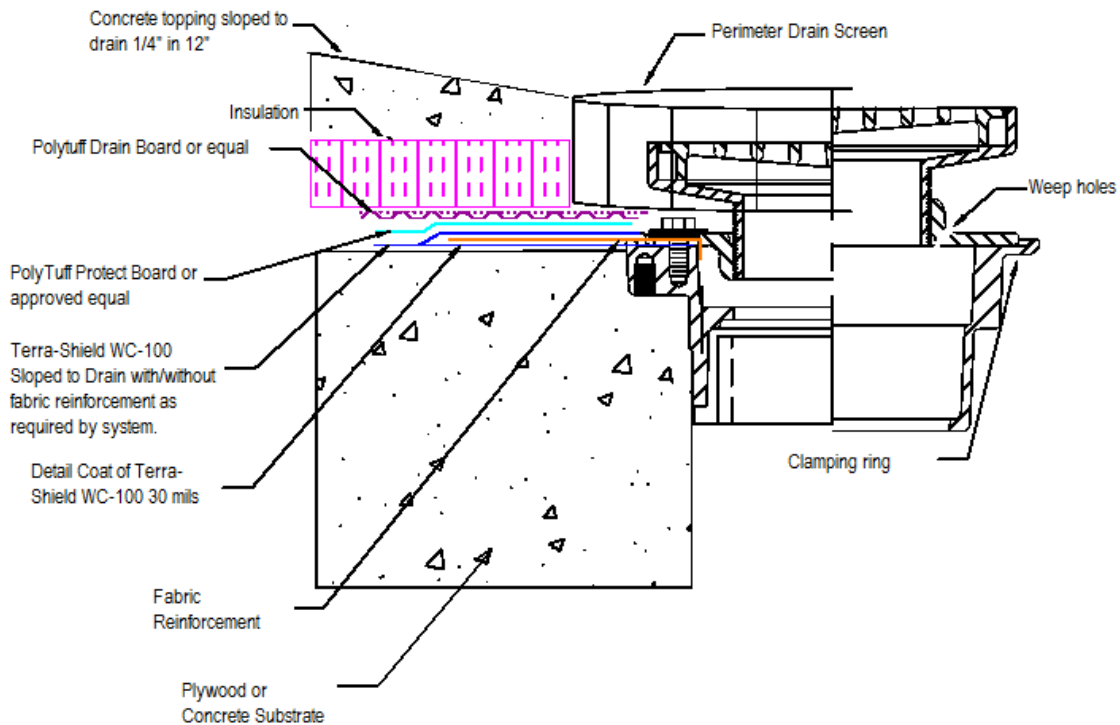
2250 E. Tropicana Ave
Suite 19-600
Las Vegas, NV 89119



Phone: (866) 977-8833
Fax: (800) 804-0182
Email: sales@polytuffus.com
Web: www.polytuffus.com

PSI Tech-Note

10/2/2006



Bi-Level Drain Detail

This detail is provided as a typical detail for the Terra-Shield WC-100 or Terra-Shield BG-100 where a concrete topping slab is poured over plywood or a mud/working concrete slab. All industry standards apply to the requirements for both the concrete and plywood thicknesses. This detail is a supplement to the PolyTuff Product Data Sheet.

The product data sheets in the product data sheet section of the Poly-Tuff Binder or at www.polytuffus.com. Feel free to consult the related data sheet or call 866.977.8833 for further information.

Bob Clanton

Bob Clanton
National Sales Manager