






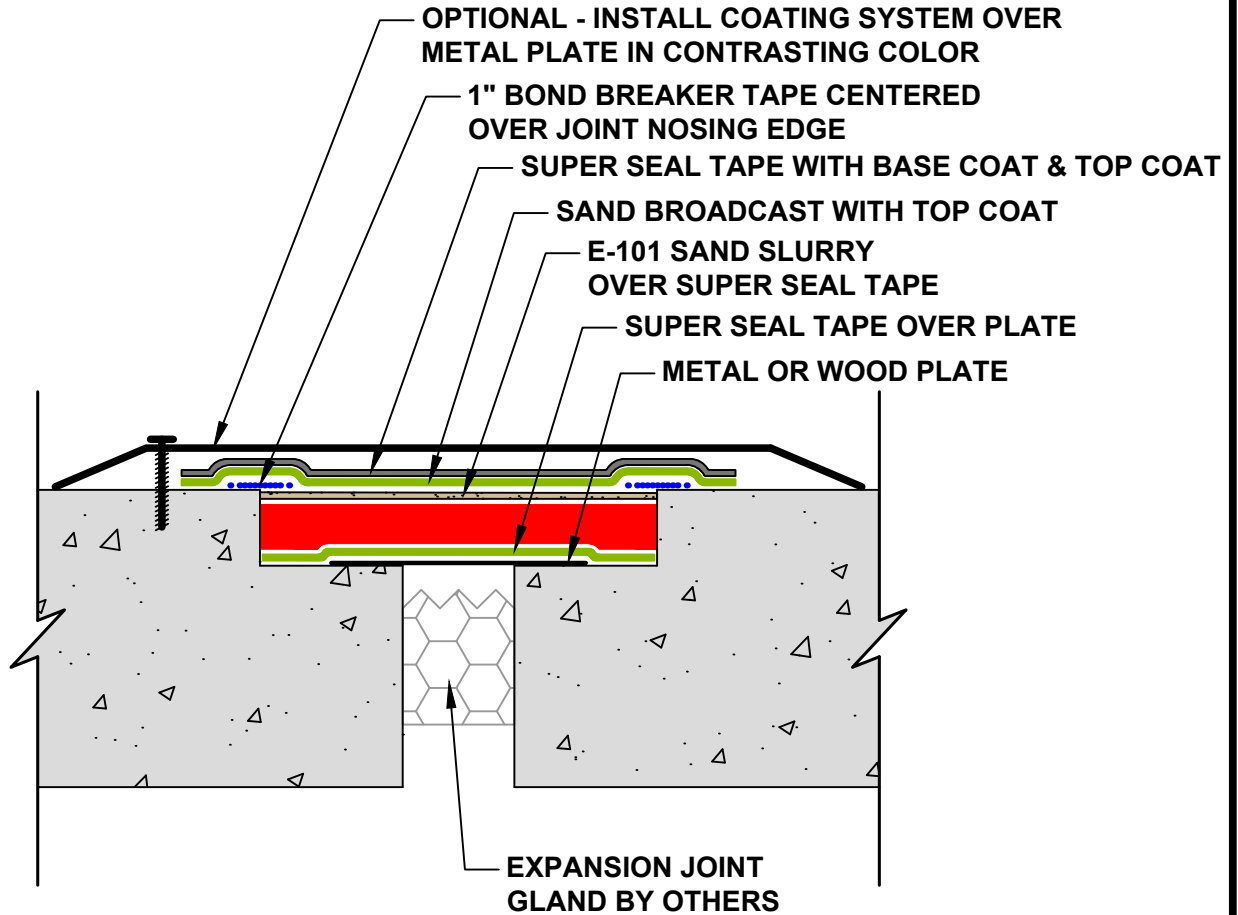


NOTES:

-  - ENVIRO-GRIP PRIMER AS SPECIFIED
-  - P-TUFF CLASSIC AT 40 MILS
-  - 16-30 MESH OR 12-20 SILICA SAND
-  - TOPSHIELD 5600EF AT 60 SQFT/GAL
-  - PTS E-101 SEALANT
-  - SUPER SEAL TAPE
-  - BOND BREAKER TAPE



1. METAL OR WOOD PLATE OVER BOTTOM OF JOINT 2" ON BOTH SIDES OF NOSING.
2. PLACE SUPER SEAL TAPE OVER HORIZONTAL JOINT SURFACE.
3. PRIME CONCRETE WITH ENVIRO-GRIP #1 PRIMER.
4. APPLY BASE COAT OVER SUPERSEAL TAPE.
5. APPLY 12" SUPER SEAL TAPE OVER SLURRY.
6. INSTALL BASE COAT OF 40 MIL OVER SUPER SEAL TAPE.
7. INSTALL METAL COVER PLATE OVER BASE COAT AND FASTEN
8. OPTIONAL - INSTALL COATING SYSTEM OVER METAL PLATE IN CONTRASTING COLOR.



8550 West Desert Inn Road
Suite 102-451
Las Vegas, NV 89117
P | 1-866-977-8833
F | 1-800-804-0182
www.polytuffus.com
sales@polytuffus.com

DETAIL NAME & DESCRIPTION:
EXPANSION JOINT REPAIR WITH E-101 SAND SLURRY

DESIGNED B. CLANTON	SHEET 1 OF 1
DRAWN M. HELMANDOTTAR	SCALE N.T.S
DATE 6/8/17	DETAIL NO. T-28